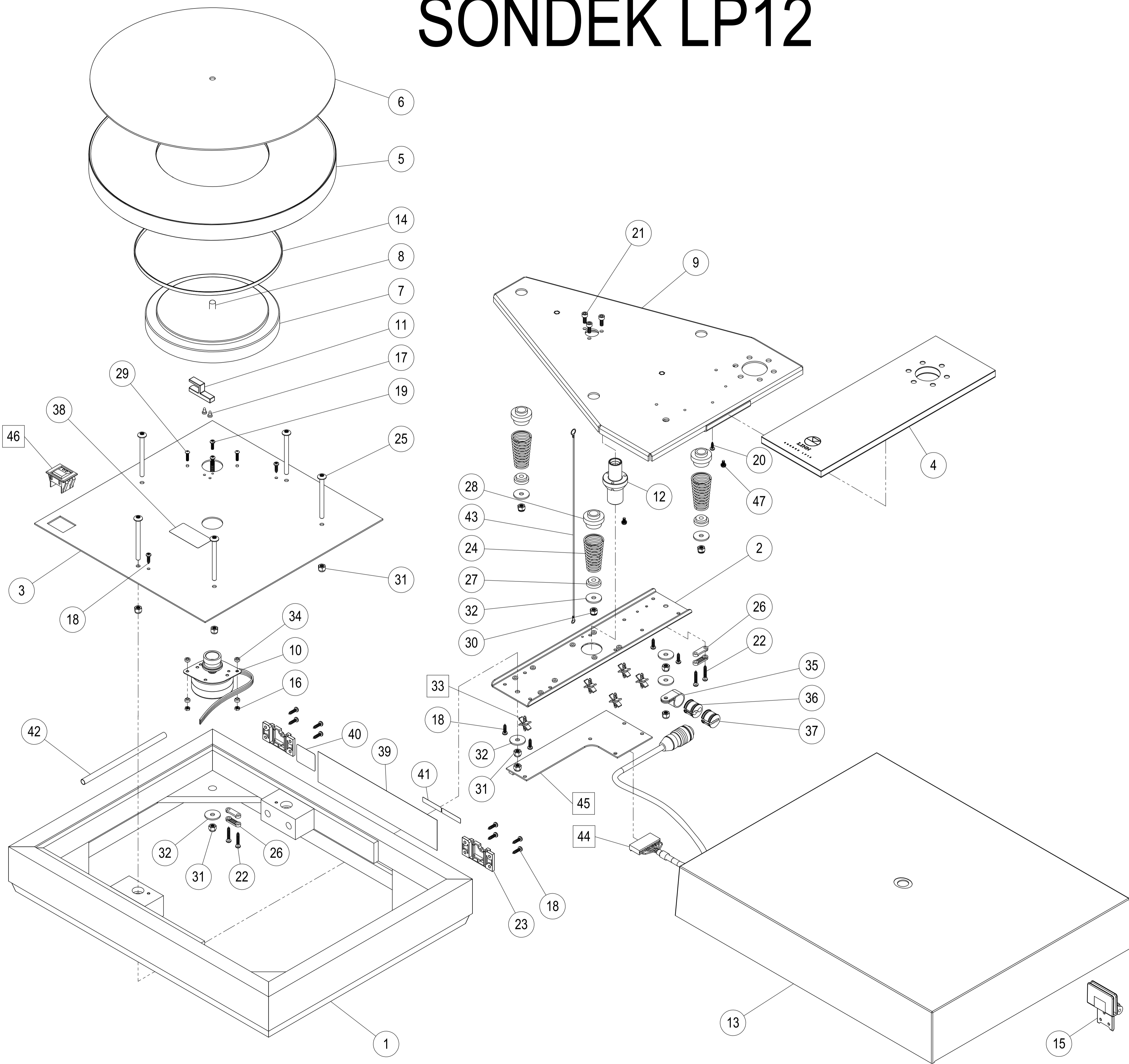


SONDEK LP12

DWG REV	PART REV	ALTERATIONS	DATE	INT.	CHKD	PASSED
1-6		SEE RADAN DRAWING				
7-8		SEE HIDDEN REVISION NOTES IN CAD FILE.				
9		REMOVED 1F-129 AND ADDED 2 EACH OF MECH 305 AND MECH 266 (FOR SUB-CHASSIS EARTHING POINTS).	20MAY11	AC	DGA	DBW
10		UPDATED WITH CURRENT SUBCHASSIS PART AND 2x MECH 794 (REPLACING 2x MECH 266/MECH 305).	08SEP14	CS	IR	DBW

PART OF OPLAT/
+ PART OF PACK 1497
^ PART OF PACK 1456



ITEM NO.	PART NO.	DESCRIPTION	QTY.
	2P-050/1	LP12 POLYSTYRENE SQUARES HOLDS INNER PLATTER	1
	2P-040	MINI GRIP PLASTIC BAGS 3 x 3 1/4	1
	TAPE 029	PACKING TAPE	0.06
	PACK 1382	REMINDER CARD FOR ONLINE WARRANTY REGISTRATION	1
	PACK 035	LP12 INNER BOX	1
	PACK 033	CARDBOARD LAYER PAD	2
	PACK 028	TURNABLE SPACER / TOP SHEET	1
	PACK 027/1	INTERMEDIATE SPACER (PACKAGING) POLYSTYRENE	1
	PACK 024	LP12 OUTER BOX	1
	LP12 OIL KIT	2.5 ml OIL BOTTLE WITH INSTRUCTION SHEET	1
	LBL 258	LARGE TAMPER PROOF LABEL	2
	LBL 139	102 x 76 mm PAPER LABELS	1
	IP-080	LID/DECK BAG SIZE 559 x 890	1
	IP-002	1" SELLOTAPE	0.014
	IL-069	SACHET SILICA GEL	1
	PACK 1497/1	LP12 ARMBOARD PACK	1
	PACK 023	POLYSTYRENE TOP TRAY	1
	47	MECH 794 M3 x 6 TORX PAN SCREW INC S/PROOF WASHER	2
	46	LSWITCH SWITCH FOR LP12 ASSEMBLY	1
	45	PCAS 101 LINGO CONNECTOR BOARD	1
	44	CONN 401/1 POWER CABLE FOR LP12	1
	43	CONN 506 EARTH WIRE	1
	42	CONN 1268 6mm ALPHAWIRE PVC SLEEVING - 140.0mm	1
	41	LBL 076 LABEL FOR SERIAL NUMBER etc.	3
	40	LBL 036 CE APPROVAL LABEL	1
	39	LBL 053/1 LP12 REAR LABEL	1
	38	2B-090 PLATTER WARNING LABEL	1
	37	MCP 1654/2 P-CLIP INNER FOR LP12 ARM CABLE - SMALL (3.5mm)	1
	36	MCP 1655/3 LARGE P-CLIP INNER PART	1
	35	P-CLIP/2 P-CLIP COMDIR PART No. CAC138	1
	34	70-061 MOTOR MOUNTING DOMES	4
	33	1E-336 BOARD SPACER	5
	32	1F-126 MUDGUARD WASHER	7
	31	1F-123 M5 NYLOCK LOCKNUT	10
	30	1F-102 M5 TURRET LOCKNUT	3
	29	1F-062 M3 x 12.0 BUTTON HEX HEAD SCREW	2
	28	2R-002 LARGE SUSPENSION GROMMET	3
	27	2R-001 SMALL SUSPENSION GROMMET	3
	26	2E-015 WIRE CLAMP	4
	25	2F-084 M5 x 60 HIGH TENSILE MUSHROOM HEAD SCREW	5
	24	2F-052 SUSPENSION SPRING	3
	23	2F-037/B LP12 LID HINGE BRACKET	2
	22	MECH 072/2 No 6 x 3/4" POZI PAN SCREW	4
	21	MECH 055 M4 x 10.0 HEX CAP SCREW	3
	20	MECH 525 No 4 x 3/8 POZI PAN SELF TAPPING SCREW	3
	19	MECH 045 M3 x 10 POZI PAN SCREW	2
	18	MECH 016 No. 6 x 1/2" WOOD SCREW	14
	17	MECH 012 4 x 1/4 SUPA PAN SELF TAPPER SCREW	2
	16	MECH 007 M3 NUT	2
	15	2F-037/H LP12 LID HINGE	2
	14	2C-050 LP12 DRIVE BELT	2
	13	MOLD 282 LP12 MOULDED LID	1
	12	70-002/1 LP12 BEARING HOUSING	1
	11	70-071 LP12 BELT GUIDE	1
	10	7E-050 LP12 MOTOR AND PULLEY	1
	9	MCP 1973 LP12 MAJIK SHEETMETAL SUBCHASSIS	1
#	8	70-060 LP12 SPINDLE	1
#	7	IPLAT-R LP12 INNER PLATER	1
	6	2W-060 FELT MAT	1
	5	OPLAT/05 LP12 OUTER PLATTER	1
+	4	2W-121/1/P LP12 ARM BOARD	1
	3	TO-PLATE/BP/B LP12 BENT & FINISHED TOP PLATE WITH STUD	1
	2	MCP 1791/1/P PAINTED WIRING STRAP FOR MAJIK LP12	1
	1	PLINTH LP12 WOODEN PLINTH	1

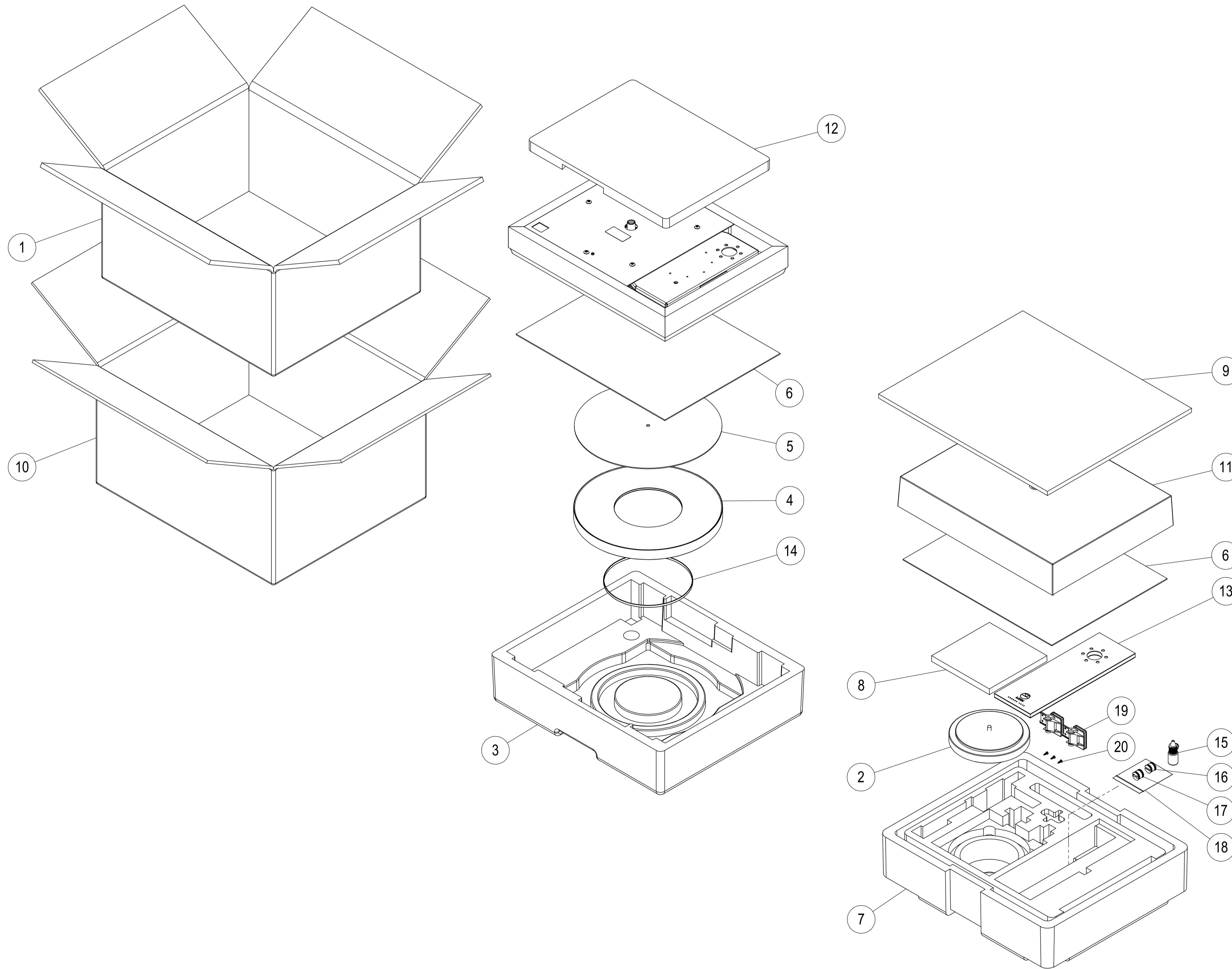
LINN PRODUCTS LTD.
GLASGOW ROAD, WATERFOOT, EAGLESHAM, GLASGOW, SCOTLAND, G76 0EQ
TELEPHONE +44 (0) 141 307 7777
www.linn.co.uk

THIS DRAWING AND THE ITEMS DEPICTED THEREON ARE THE SUBJECT OF COPYRIGHT AND DESIGN RIGHT AND MUST NOT BE COPIED OR OTHERWISE REPRODUCED IN WHOLE OR IN PART WITHOUT THE EXPRESS WRITTEN PERMISSION OF LINN PRODUCTS LTD. TECHNICAL INFORMATION, DRAWINGS, DESIGN AND OTHER DATA SUPPLIED BY LINN ARE CONFIDENTIAL AND WILL NOT, WITHOUT THE PRIOR WRITTEN CONSENT OF LINN PRODUCTS, BE DISCLOSED TO ANY THIRD PARTY AND WILL BE USED SOLELY FOR THE PURPOSE OF THE ORDER AND AT ALL TIMES REMAIN THE PROPERTY OF LINN PRODUCTS.

ENSURE ALL PARTS ARE ROHS COMPLIANT (2002/95/EC)

THIRD ANGLE PROJECTION	UNIT OF MEASURE mm	SHEET NO. 1	NO. OF SHEETS 2	DATE 30APR07	PART NO. SAME AS DRG.
SCALE 1:2.5	MATERIAL SEE NOTES	DRG. NO. LP12B/2		REV. 10	
DRAWN DGA	CHKD DBW	PASSED AB	TITLE LINN SONDEK LP12		

SONDEK LP12 IN PACKAGING



ITEM NO.	PART NO.	DESCRIPTION	QTY.
22	LP12	LP12 Standard	1
20	MECH 525	No 4 x 3/8 POZI PAN SELF TAPPING SCREW	3
19	2F-037/H	LP12 LID HINGE	2
18	2P-040	MINIGRIP BAG 3 x 3 1/4	1
17	MCP 1655/3	LARGE P-CLIP INNER PART	1
16	MCP 1654/2	P-CLIP INNER FOR LP12 ARM CABLE - SMALL (3.5mm)	1
15	LP12 OIL KIT	2.5ml OIL BOTTLE WITH INSTRUCTION SHEET	1
14	2C-050	LP12 DRIVE BELT	2
13	2W-121/1/P	LP12 ARM BOARD	1
12	PACK 027	INTERMEDIATE POLYSTYRENE SPACER	1
11	MOLD 282	LP12 MOULDED LID	1
10	PACK 024	LP12 OUTER BOX	1
9	PACK 028	POLYSTYRENE TOP SHEET	1
8	2P-050/1	POLYSTYRENE SQUARES TO HOLD INNER PLATTER	1
7	PACK 023	POLYSTYRENE TOP TRAY	1
6	PACK 033	CARDBOARD LAYER PAD	2
5	2W-060	FELT MAT	1
4	OPLAT/05	LP12 OUTER PLATTER	1
3	PACK 030	LP12 POLYSTYRENE BOTTOM TRAY	1
2	IPLAT-R	LP12 INNER PLATER	1
1	PACK 035	LP12 INNER BOX	1

LINN PRODUCTS LTD. (*TRADE MARK)
 GLASGOW ROAD, WATERFOOT, EAGLESHAM, GLASGOW, SCOTLAND, G76 0EQ
 TELEPHONE +44 (0) 141 307 7777
 www.linn.co.uk

COPYRIGHT LINN PRODUCTS

THIS DRAWING AND THE ITEMS DEPICTED THEREON ARE THE SUBJECT OF COPYRIGHT AND DESIGN RIGHT AND MUST NOT BE COPIED OR OTHERWISE REPRODUCED IN WHOLE OR IN PART WITHOUT THE EXPRESS WRITTEN PERMISSION OF LINN PRODUCTS LTD. TECHNICAL INFORMATION, DRAWINGS, DESIGN AND OTHER DATA SUPPLIED BY LINN ARE CONFIDENTIAL AND WILL NOT, WITHOUT THE PRIOR WRITTEN CONSENT OF LINN PRODUCTS, BE DISCLOSED TO ANY THIRD PARTY AND WILL BE USED SOLELY FOR THE PURPOSE OF THE ORDER AND AT ALL TIMES REMAIN THE PROPERTY OF LINN PRODUCTS.

ENSURE ALL PARTS ARE ROHS COMPLIANT (2002/95/EC)

THIRD ANGLE PROJECTION	UNIT OF MEASURE mm	SHEET NO. 2	NO. OF SHEETS 2	DATE 30APR07	PART NO. SAME AS DRG.
	SCALE 1:4.5	MATERIAL SEE NOTES	DRG. NO. LP12B/2		
DRAWN DGA	CHKD DBW	PASSED AB	TITLE LINN SONDEK LP12		
			REV. 10		